

Welcome to Week 6, Term 3 - 2011

Principal's Diary...

Kia ora Te Awamutu Learning Family/Whanau,

I would like to welcome all new students who have started at TAPS this term, not only to TAPS, but a lovely welcome to Te Awamutu.

I would like to remind all families about the student-led conferences next Wednesday (14th Sept) and Thursday (15th Sept) evenings. School will be closing at 2pm on both of these days, if your child attends after school care, this will be starting at the earlier time and bus students will be supervised until the bus arrives at the usual time. The instructions on how to book your interview times went home last week. If you have any queries, please contact your class teacher. We look forward to hosting you all and sharing your children's wonderful efforts.

We welcome spring and the fabulous weather we are having. Two more sleeps before the Rugby World Cup starts and we are going to have a MUFTI DAY, this Friday. This is to celebrate the opening of the World Cup and support for our All Blacks who play Tonga Friday night. This is a **FREE** mufti day for all – we encourage all students to wear their favourite country's colours e.g. green- Ireland, red – Tonga, blue – Argentina etc.

Yours in learning

Gareth Duncan

Principal

Check out our web site:

www.taps.school.nz

SCHOOL NOTICES

Student led Conferences

As technology grows, so do we Remember you can book online for your student led conferences. A newsletter went home recently with instructions, if you have misplaced this; please contact your class teacher.

Inquiry Centre News:

Our exciting Scholastic Book Fair will be held next week.

Dates and Times

Monday 12th Sept – 8.30am – 9.00am, 3.00pm – 4.00pm

Tuesday 13th Sept – 8.30am – 9.00am, 3.00pm – 4.00pm

Wednesday 14th Sept – 8.30am – 9.00am, 3.00pm – 6.00pm

Thursday 15th Sept - 8.30am – 9.00am, 3.00pm – 6.00pm

So come along and experience the fantastic array of books, posters and variety of items on offer, and get some awesome ideas for Christmas presents. Remember that 30% of all sales come back to our school, providing amazing new books for our students to discover and enjoy. See you there!

Sickness & Illness

Can we remind you and your children to be vigilant when washing your hands before & after eating and toileting. We have had a few cases of tummy bugs. If your child has been sick, it is recommended they do not return to school for 24 hours, this is to protect your child and others. Chicken Pox has made its way in to school and has infected a small number of children. If your child contracts Chicken Pox, Ministry of Health guidelines state that your child is infectious up to 5 days before the appearance of the rash until lesions have crusted. It is strongly suggested that your child stay away from school for one week from the date of appearance of the rash.

Te Awamutu Schools Kapa Haka

"Ra Whakanui Rangatahi" Festival

This year the festival is being held at Te Awamutu College on Tuesday September 27th. Any enquires can be directed to Whaea Erin.

PTA Support:

We would like to remind families that the PTA is a very small, but active group in our school, they need your help. Why not join and support the 2011 fundraising efforts. Please call the school to find out more information if you are able to help in anyway.

NEXT PTA MEETING – Tonight - WEDNESDAY 7th SEPTEMBER IN THE STAFF ROOM STARTING AT 7PM.

Inter-Schools Cross Country

Congratulations to everyone in Syndicate 3 and 4, who took part in last week's cross country and a special congratulations to those of you that made it into the Inter-Schools Cross Country. Kihikihi Primary School is organising this year's inter-schools which is being held at the Kihikihi Domain on Friday 9th September. If your child made it through, they will have brought home a leaflet with all information pertaining to this. If you require any further information, please ring the school office.

Enrolment Scheme:

(This applies to any future enrolments NOT existing students)

The board invites applications from parents who wish to enrol their sons and daughters at Te Awamutu Primary School for Term 4 2011 & Term 1 2012. Applications for OUT OF ZONE places are now being invited for those students who will become eligible for enrolment during the following periods; 25 October 2011 - 20 December 2011 (Term 4) and 31 January 2012 – 5 April 2012 (Term 1 next year)**

The deadline for out of zone applications for Term 4 2011 is Friday 30 September & for Term 1 2012, applications close Friday 18 November 2011. If a ballot for out of zone places is required it will be held the following Wednesday. Parents will be informed of the outcome within three school days of the ballot being held.

**** If you live in the home zone and have not yet signalled your intention to enrol your child later this year or next year please advise the school immediately to assist us to plan appropriately. If you have friends or family intending to enrol children in the future, please share this information with them. A copy of the home zone map can be found on our website or at the school office.**

Wednesday Wonderland Early Childhood Programme 2011

We would like to extend an invite to all our pre-school community (all children 4.5 years and older) to take up the invitation to come to our preparation for school programme run every Wednesday afternoon 1.30pm - 3pm with Maree Parkes (new entrant teacher and TAPS Community Connector). Please come to the main foyer of the school for directions as to where this is being held. This programme is free of charge and funded by the school. **PLEASE NOTE: There will be no Wednesday Wonderland next week (Wednesday 14th September) due to Student led conferences.**

School Fees:

Statements for the outstanding compulsory consumables fee and the school donations were sent recently and are now overdue. If payment in full is difficult, part payments will be accepted over time to clear the debt. Eftpos is available at the main office. Updated statements for senior students will go home this week.

Uniform clarification:

We would like to clarify that during the winter months children are able to wear thermals under their school shirt. The colours that are allowed are: Black, blue and white only. Please do not send your child in any other colour with stripy thermals under their school uniform, as they will be asked to take them off. Thank you for helping with consistency of our uniform policy. The uniform shop is open on Wednesday mornings from 8.15 till 9am. Please note that as from September 1st, there will be a slight increase in uniform costs.

Congratulations

Karauria Waitere, Lachlan Tims, Matthew Fairhurst, Tukotahi Tuapiki, Quentin Baxter and Wade Patterson for making the Te Awamutu Year 6 Rugby Team and winning their tournament on Sunday 28th August. They defeated Matamata 22-0, Cambridge 27-5 and Morrinsville 41-0. Well done Dean Jones on coaching such a successful young team!

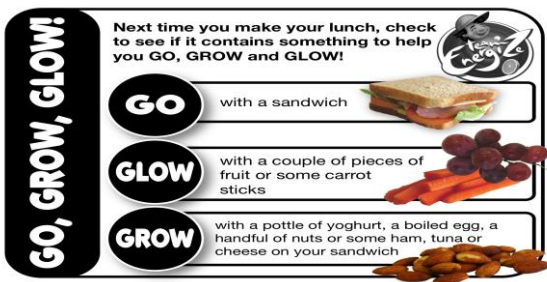
Milo Monday

Every Monday at morning tea children can purchase a milo & cookie for \$2 from the tuck shop located in the foyer of the hall.



Pedestrian Crossings and School Driveways

We have noticed a number of parents crossing their children on either side of the school crossing on Teasdale Street. As we like to instil good road sense, we ask that all parents/caregivers and especially children, use the pedestrian crossings. **The Bank Street driveway, is for staff and trade vehicles only.** For child safety, please use the footpath alongside the driveway when entering and leaving the school grounds. Please note: vehicles are not permitted to park (whether picking up or dropping off) in the bus bay on Teasdale Street. **This is a bus park only.**



Wow! What a great show! Thank you to all students for displaying fantastic manners and being great representatives for TAPS! Also a BIG thank you to all parent helpers.

GEMS OF THE WEEK

Throughout our school, we have been concentrating on our literacy programme and the work that is coming from our students is exceptional. Some of the language features the children are learning are:

Onomatopoeias - words that sound like things they describe

e.g roar, bang, smash, pop

Similes - Similes say something is like something else

e.g he ran as quick as lightning

Personification: this is when we give human characteristics to animals, Abstract concepts or inanimate objects

e.g the sun smiled down, wrapping me in her warm embrace

We would like you all to take the time to read the gems of the week from room 7 in syndicate 2. - Well Done!

I saw bubbles falling in the air. Up, down, up, down, up and down.

The smooth things landing on the ground! Popping on the ground!

Bubbles! Bubbles dancing in the sky. Ready to - POP!

By Solomon Howells

Bubble, bubble. Pop! Pop!

The bubbles dancing through the air. Balls of imagination.

"Psst, let's pop," whispered the bubble, so POP! POP!

"Please come back!" shouted a child. "Time to come in!"

Bellowed the teacher to the children.

By Sophie Jackson

Term Diary

Week 6

Fri 9th September - MUFTI DAY
& Interschool Cross Country

Week 7

Mon 12th - Thurs 15th September - Book Fair
Wed 14th - Thurs 15th September - Student led conferences

Week 8

Mon 19th September - Whanau Hui re: Kawhia
Thurs 22nd September - Syndicate 1 & 2 Cross Country

Week 9

Tues 27th September - Kapa Haka Festival at Te Awamutu College
& BOT Meeting
Thurs 29th September - Guest Speaker - Dave Hadfield
7pm in the school hall

*Learning Journeys go home this Friday, and are to be returned
Monday 12th September.*

Dave Hadfield

**Mental Skills provider for NZ U-20s
& NZ Schools Rugby Teams.**

**29th September 2011 at 7pm in the
Te Awamutu Primary School Hall
Come and listen to his thoughts about
preparing young athletes for life.**

\$5 door charge

**All enquiries, please call the school office
871 5378**

Phantom Kickboxing

Come with a friend to our TA Club to train and train for half price throughout September. Adult beginners 6.30pm Tues; Kids 6pm Thurs; Kickboxercise 6.30pm Thurs; Ladies only 6.30pm Mondays. Behind Marshalls Pharmacy, Teasdale Street. For more details ring 027 2552522 or email rick@phantomkickboxing.co.nz

The Maunga Challenge promotes the Waikato, the Maungatautari Ecological Island Trust Education Facility and Provides a challenge of riding around the majestic

Maungatautari Mountain. There are events for all ages and abilities. The date for this year's challenge is

November 13th 2011. Get training now!

More information can be found at

www.maungachallenge.co.nz

**Mufti Day - this Friday
Dress in your favourite country's
colours**

An Important Reminder for all parents & caregivers.

The Bank Street entrance to the school grounds is for staff and trade vehicles only. The gate will be closed during these busy times (8.30 - 9.05am and 2.30 - 3.15pm) for child safety.

